

# North Charlotte Dental Hygiene Study Club

## Oral Pathology Scenario #4

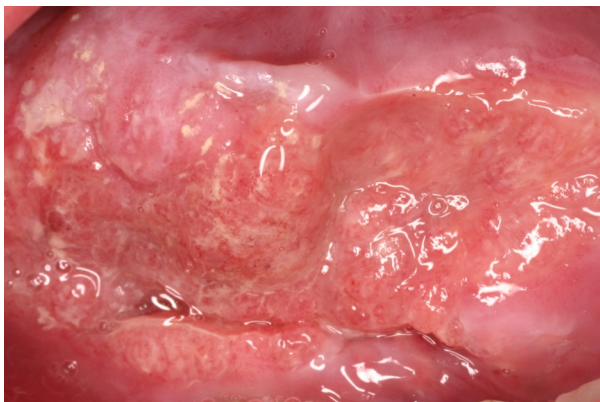


### History:

**Tongue pain (localized)**  
**On-going and worsening pain over past year**  
**Biting tongue**  
**Multiple medications—xerostomia**  
**Harder to swallow**



-----  
**Gen Dentist has been treating**  
**No resolution**



-----  
**Patient self-referred to our office**  
**Brought all medications to ameliorate:**

**Lichen Planus: Clotrimazole troches;**  
**Magic Mouthrinse; Clobetasol rinse;**  
**Fluocinonide gel**

**Dry Mouth: Evoxac**

**1. What criteria help in the diagnosis?**

**2. What do you think it is?**