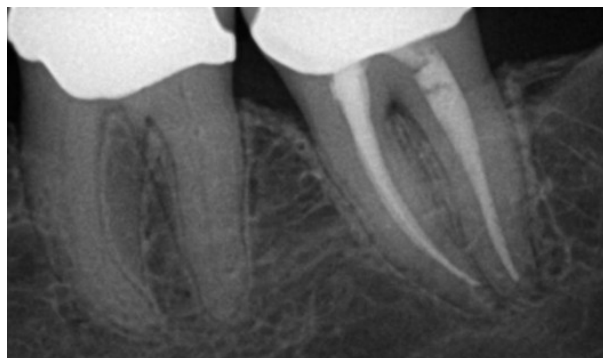


North Charlotte Dental Hygiene Study Club

Oral Pathology Scenario #2

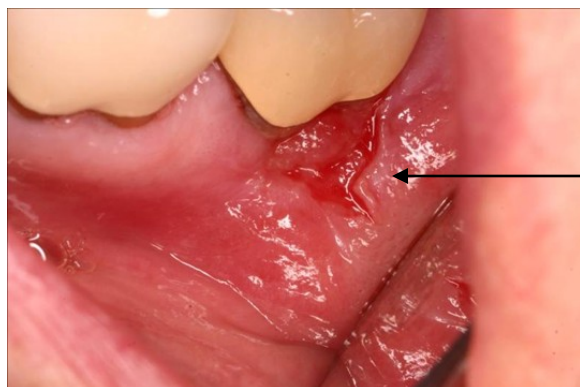
History:

“gum irritation and pain” - on facial
On-going over past year
Hard to brush and floss area
Localized site
RCT then performed—no resolution of symptoms

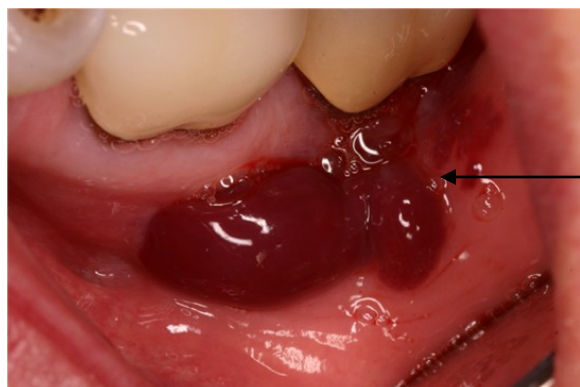


Patient referred to our office

Gingival pain and irritation
“ulcerated tissue”



Rubbed tissue with mirror
Led to subepithelial hematoma—
developed over 2-3 minutes



1. What criteria help in the diagnosis?

2. What do you think it is?