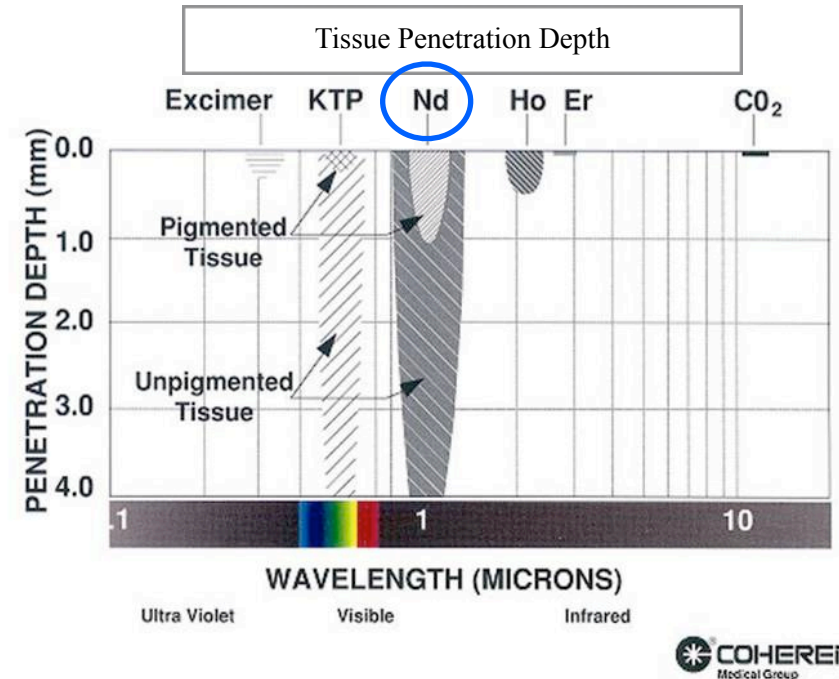
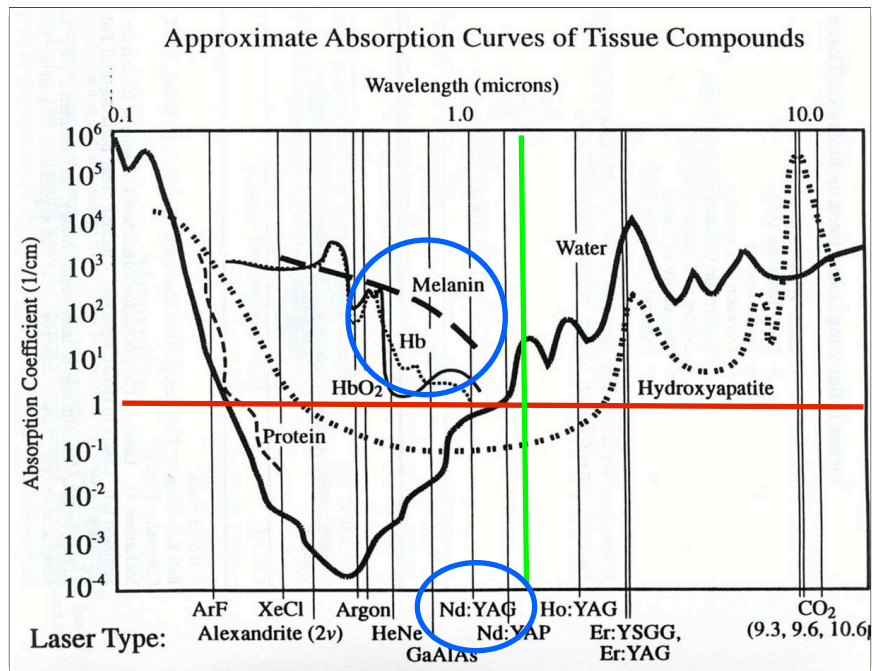


ABSORPTION CURVES AND TISSUE PENETRATION DEPTH CHARTS FOR SPECIFIC LASER WAVELENGTHS



- Chart demonstrates absorption of laser energy in tissue compounds.
- Nd:YAG and Diode lasers are absorbed in pigmented tissues.
- Erbium and CO₂ are mainly absorbed in water and hydroxyapatite.

- Tissue Penetration depth for Nd:YAG laser exceeds 4mm.
- Penetration of laser energy is far less for Diode, Erbium and CO₂.